

CAREER DIRECTIONS FOR STUDENTS IN ARCHITECTURE, CONSTRUCTION AND ENGINEERING

Joseph M. Sanches, MBA
Chief Operating Officer



ACE MENTOR PROGRAM

ARCHITECTURE • CONSTRUCTION • ENGINEERING

Engage Excite Enlighten



CAREER DIRECTIONS FOR STUDENTS IN ARCHITECTURE, CONSTRUCTION AND ENGINEERING

Joseph M. Sanches, MBA

Chief Operating Officer, School District of Palm Beach County





THE MISSION

To **ENGAGE**, **EXCITE** and **ENLIGHTEN** high school students to pursue careers in architecture, engineering and construction through mentoring and to support their continued advancement in the industry.



WHY?

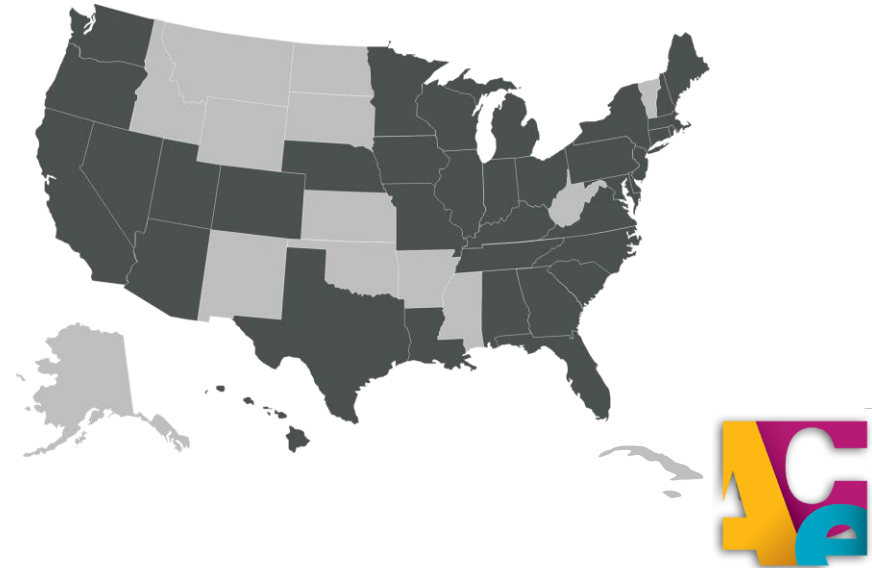
- One of America's top economic engines, the integrated design and construction industry faces a serious workforce shortage.
- The retirement of baby boomers is depleting the ranks of the 7 million people employed in the A/E/C industry.
- ACE mentors have inspired thousands of young people to consider and pursue industry careers.



ACE MENTOR PROGRAM of AMERICA

The Network

- ACE's 70 affiliates operate in 37 states, the District of Columbia and Puerto Rico. Most affiliates are based in urban communities.
- Over 12,000 students and about 5,000 mentors each year
- \$3,947,800 awarded in scholarships last year





ACE MENTOR PROGRAM of AMERICA

ACE Palm Beach County and Treasure Coast (Florida)

School District of Palm Beach County

- Atlantic High School
- Wellington High School
- Dwyer High School
- Seminole Ridge High School
- Lake Worth High School
- Palm Beach Central High School
- Forest Hill High School

Martin County School District

- South Fork High School

Future Participation

- Okeechobee High School
- St. Lucie Public Schools



St. Lucie
PUBLIC SCHOOLS



WHAT ACE DOES

ACE isn't about merely describing specific professions, it's about immersing students in the profession by engaging them in actual building projects.





OUR MEETINGS

Professionals meet with a group of Students.

- 14-15 sessions, bi-weekly.
- 7-8 month long adventure.
- Meetings occur in schools, mentor offices, or other locations.
- Through hands-on activities, student teams first learn basic skills and knowledge. They apply this to developing realistic projects in second half of program (geared towards CIRT National Competition).



MEETING AGENDA



PRESENTATION

Brief mentor presentations about topic of session and/or introduction to a particular ACE career path.



ACTIVITY

Hands-on activities and/or working with students on mock design project.



WRAP-UP

Wrap-up – review of session's accomplishments, goals for next session.



CIRT National Design & Construction Competition

- The competition presents **three real-world project challenges** to judge the ability of the students to make **reasoned, coherent, clear presentations** on their team's design and construction approaches that are realistic and responsive to the project's objectives **within time, budget, constructability constraints**, etc.
- The competition challenges students to develop **innovative solutions , blending architecture, engineering, and construction** management into one exciting project.
- Over the 7-8 months, teams will refine their concepts and prepare to **present to industry leaders** and compete for top honors.
- The competition was developed in order to introduce additional ways for students to **develop valuable skills**, and help them gain even more **recognition and connection** with professionals in the industry.



CIRT National Design & Construction Competition



2026 Challenges

- **Net Zero Data Center** - Design a Net Zero data center that significantly reduces its environmental impact / carbon footprint, and respects the surrounding community
- **Cultural Destination** - Design an iconic structure/space/building that elevates an existing destination—enhancing its appeal to visitors while preserving the authenticity and cultural identity that make it valuable to the local community
- **Modular/Tech-enabled Build** - Design a structure that incorporates at least one cutting-edge tech-enabled modular construction technique while clearly demonstrating why and how your solution could be a preferred, sustainable method over standard building practices



EXPOSURE

ACE offers students a unique experience and opportunity to visit various places associated with the design and construction industry!

- **CONSTRUCTION SITES**
- **MENTOR FIRMS OFFICES**
- **UNIVERSITY VISITS**
- **NATIONAL COMPETITIONS**
- **AND MORE**



FIELD TRIPS



2018 SITE TOUR

ACE Field Trip - February 24, 9:00 am

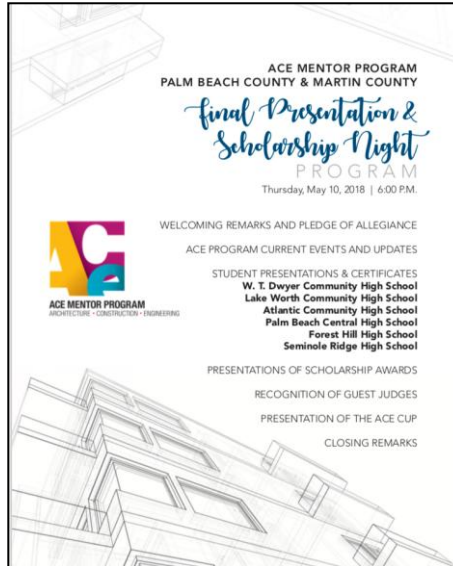
Students will have the opportunity to tour Clarity Pointe, a 215-unit Memory Care and Assisted Living Facility in the new Alton Development in Palm Beach Gardens.

Directions

From I-95, take Donald Ross Road exit - go east. Take 1st right onto Pastreur Blvd. (only 150 yards off 95). Drive 1/2 mile, site is at end of street...you'll see roundabout and KAST sign. Park on side of road of Pastreur Blvd. (address will not appear on GPS - new road)



FINAL PRESENTATIONS



FINAL PRESENTATION & SCHOLARSHIP NIGHT



SUCCESS STORIES

Christian Rodriguez-Romero

Student at **South Fork High School** and participated in the ACE program in 2024.

- Now an intern at a mentor firm, Morganti Construction.



2024



Now

Shligton Estime

Student at **Atlantic High School** (Hedrick was his mentor firm)

- University of Florida Graduate – BS Construction Management
- Hedrick Brothers Construction Project Manager





Habitat For Humanity House

Seminole Ridge High School - Weitz Construction Academy

- Each year for the past 12 years, the students of Seminole Ridge Construction Academy are taught about construction techniques in all trades as they construct the modular components of a four room house in the school's shop. The components are then transported to a waiting foundation and [assembled in place](#). Most of the installation work is performed by volunteer trades from the community, but the students get to work on all aspects and gain immense experience.

Financial support provided by Habitat For Humanity and technical support from Weitz Construction, their partners and David Porter Architects.

www.seminoleridgehabitatohouse.com



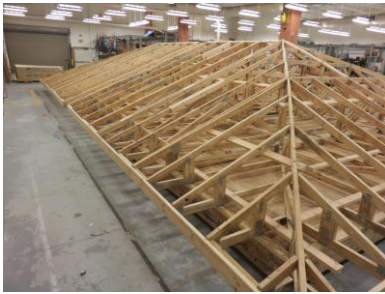
Architect & Academy Teacher





Habitat For Humanity House

Seminole Ridge High School - Weitz Construction Academy





THANK YOU!

FOR MORE INFORMATION PLEASE CONTACT US!



ADDRESS

1662 N. US Highway 1,
Suite C
Jupiter, FL 33469



EMAIL

bmartin@morganti.com



TELEPHONE

561-689-0200

VISIT US ONLINE <http://www.acementor.org/>

